

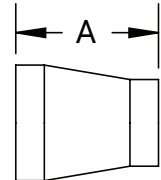
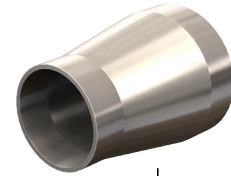
High Purity BioPharm Fittings

Weld x Weld Concentric Reducers – 2211C



621
63-04

Size	A (in)	Nominal Wall (in)	PL finish - SF1	PM finish - SF4
3/4" x 1/2"	2.125	0.065 x 0.065	2211CBB075050F1	2211CBB075050F4
1" x 1/2"	2.500	0.065 x 0.065	2211CBB100050F1	2211CBB100050F4
1" x 3/4"	2.125	0.065 x 0.065	2211CBB100075F1	2211CBB100075F4
1-1/2" x 3/4"	3.000	0.065 x 0.065	2211CBB150075F1	2211CBB150075F4
1-1/2" x 1"	2.500	0.065 x 0.065	2211CBB150100F1	2211CBB150100F4
2" x 1"	3.375	0.065 x 0.065	2211CBB200100F1	2211CBB200100F4
2" x 1-1/2"	2.500	0.065 x 0.065	2211CBB200150F1	2211CBB200150F4
2-1/2" x 1-1/2"	3.375	0.065 x 0.065	2211CBB250150F1	2211CBB250150F4
2-1/2" x 2"	2.500	0.065 x 0.065	2211CBB250200F1	2211CBB250200F4
3" x 1-1/2"	4.250	0.065 x 0.065	2211CBB300150F1	2211CBB300150F4
3" x 2"	3.375	0.065 x 0.065	2211CBB300200F1	2211CBB300200F4
3" x 2-1/2"	2.625	0.065 x 0.065	2211CBB300250F1	2211CBB300250F4
4" x 2"	5.125	0.083 x 0.065	2211CBB400200F1	2211CBB400200F4
4" x 2-1/2"	4.250	0.083 x 0.065	2211CBB400250F1	2211CBB400250F4
4" x 3"	3.875	0.083 x 0.065	2211CBB400300F1	2211CBB400300F4
6" x 3"	7.250	0.109 x 0.065	2211CBB600300F1	2211CBB600300F4
6" x 4"	5.625	0.109 x 0.083	2211CBB600400F1	2211CBB600400F4

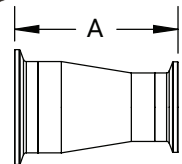
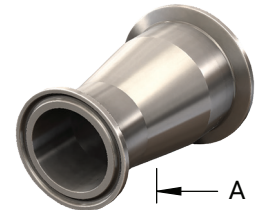
BPE Table DT-4.1.3-1
ASME BPE 2019

Clamp x Clamp Concentric Reducers – 2221C



621
63-04

Size	A (in)	PL finish - SF1	PM finish - SF4
3/4" x 1/2"	3.125	2221CBB075050F1	2221CBB075050F4
1" x 1/2"	3.500	2221CBB100050F1	2221CBB100050F4
1" x 3/4"	3.125	2221CBB100075F1	2221CBB100075F4
1-1/2" x 3/4"	4.000	2221CBB150075F1	2221CBB150075F4
1-1/2" x 1"	3.500	2221CBB150100F1	2221CBB150100F4
2" x 1"	4.375	2221CBB200100F1	2221CBB200100F4
2" x 1-1/2"	3.500	2221CBB200150F1	2221CBB200150F4
2-1/2" x 1-1/2"	4.375	2221CBB250150F1	2221CBB250150F4
2-1/2" x 2"	3.500	2221CBB250200F1	2221CBB250200F4
3" x 1-1/2"	5.250	2221CBB300150F1	2221CBB300150F4
3" x 2"	4.375	2221CBB300200F1	2221CBB300200F4
3" x 2-1/2"	3.625	2221CBB300250F1	2221CBB300250F4
4" x 2"	6.250	2221CBB400200F1	2221CBB400200F4
4" x 2-1/2"	5.375	2221CBB400250F1	2221CBB400250F4
4" x 3"	5.000	2221CBB400300F1	2221CBB400300F4
6" x 3"	8.500	2221CBB600300F1	2221CBB600300F4
6" x 4"	7.000	2221CBB600400F1	2221CBB600400F4

BPE Table DT-4.1.3-3
ASME BPE 2019

NOTE: BPE 2019 Specifications

PL Finish – SF1

O.D. = 32Ra Mechanically Polished

I.D. = 20Ra Mechanically Polished

PM Finish – SF4

O.D. = 32Ra Mechanically Polished

I.D. = 15Ra Mechanically Polished and Electropolished