

Non-Encapsulated 2-Way, 3-Piece Stainless Steel Ball Valves

Features

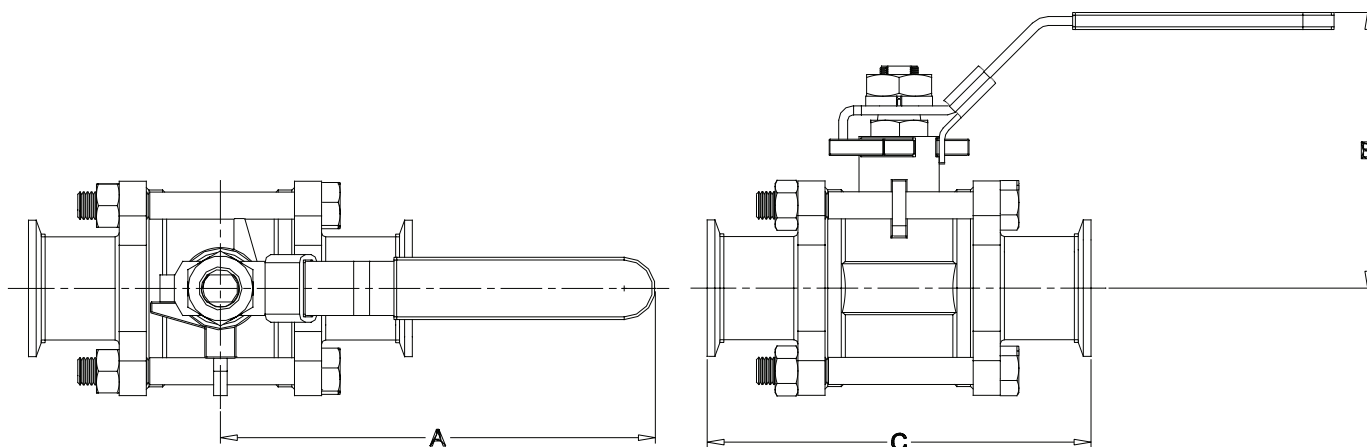
- Blowout-proof stem
- Live-loaded stem packing
- I.D. polish is Ra 32
- Lockable handle

Materials

- Body, ends, and ball: CF8M stainless
- Seats: 15% glass reinforced PTFE

Specifications

- Maximum pressure rating: 1/2" - 2" **1000 PSI WOG**, 2-1/2" - 4" **800 PSI WOG**
- Maximum temperature: **300°F (149°C)**
- Repair kits available


M

Size	Dimensions			316 Stainless Steel Part #
	A (in)	B (in)	C (in)	
1/2"	4.1	2.3	4.6	BV2GG-050CC-A
3/4"	4.1	2.5	4.7	BV2GG-075CC-A
1"	5.0	2.8	4.9	BV2GG-100CC-A
1-1/2"	6.1	3.5	5.6	BV2GG-150CC-A
2"	7.6	3.9	6.4	BV2GG-200CC-A
2-1/2"	7.6	4.4	7.8	BV2GG-250CC-A
3"	10.9	4.9	9.0	BV2GG-300CC-A
4"	13.2	6.6	9.6	BV2GG-400CC-A

NOTE: Dimensions are approximate. Engineering dimensions are available upon request. Specifications are subject to change without notice.